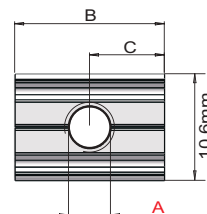
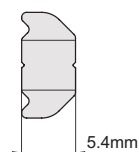


T型螺母 T-Nuts

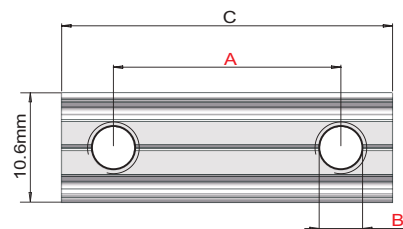
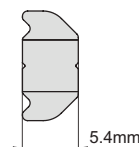
型材
SUS Tube



支架
模组

| 货号(PN) | 型号(Model) | A(mm) | B(mm) | C(mm) | 重量(Weight) |
|----------|-----------|-------|-------|-------|------------|
| 7.Y00651 | PTN-M4 | M4 | 15 | 7.5 | 5g |
| 7.Y00425 | PTN-M5 | M5 | 15 | 7.5 | 5g |
| 7.Y00652 | PTN-M6 | M6 | 15 | 7.5 | 5g |

快换
Quick Changer



夹具
组件

| 货号(PN) | 型号(Model) | A(mm) | B(mm) | C(mm) | 重量(Weight) |
|----------|-----------|-------|-------|-------|------------|
| 7.Y00653 | PTN-M4P8 | 8 | M4 | 16 | 5g |
| 7.Y00654 | PTN-M5P10 | 10 | M5 | 20 | 7g |
| 7.Y00655 | PTN-M5P15 | 15 | M5 | 25 | 9g |
| 7.Y00656 | PTN-M5P17 | 17 | M5 | 25 | 9g |
| 7.Y00657 | PTN-M5P22 | 22 | M5 | 32 | 11g |
| 7.Y00658 | PTN-M5P25 | 25 | M5 | 35 | 13g |
| 7.Y00659 | PTN-M5P28 | 28 | M5 | 38 | 14g |
| 7.Y00660 | PTN-M5P30 | 30 | M5 | 40 | 15g |
| 7.Y00661 | PTN-M5P35 | 35 | M5 | 45 | 16g |
| 7.Y00662 | PTN-M5P40 | 40 | M5 | 50 | 18g |
| 7.Y00663 | PTN-M5P50 | 50 | M5 | 60 | 22g |
| 7.Y00664 | PTN-M5P60 | 60 | M5 | 70 | 26g |
| 7.Y00665 | PTN-M5P90 | 90 | M5 | 100 | 38g |

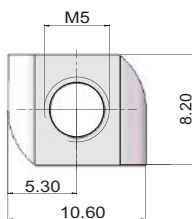
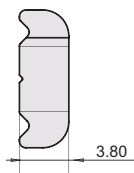
气动
剪刀

真空
组件

附加螺母 Last-Minute Nut

当已装配好的治具需要增加一些配件时可以使用。

To be used when you need to add something to an already assembled EOAT.



附件
Accessory Components

| 货号(PN) | 型号(Model) | 重量(Weight) |
|----------|-----------|------------|
| 7.Y00805 | PTN-M5R | 2g |